

BEFORE YOU INSTALL

Each UniClutch is 100% tested and marked with a unique QR code. Scan the code on the base of the clutch to register it before installation. This will unlock exclusive benefits and also give you access to the detailed performance specifications of your unit, including manufacturing data.

UniClutch is a sealed design which has been robotically assembled and 100% tested in our factory guaranteeing performance and quality. A unique QR code is lasered on the bottom of each unit to show manufacturing information and conformity, as well as performance and operation specifications. A UniClutch should **NEVER** be disassembled as this will alter the as tested characteristics and result in an immediate **VOID** of warranty. No service or support can be provided if a UniClutch has been tampered with or disassembled, even after use in a vehicle or upon suspected issues.

This custom installation guide outlines the specifications and installation procedures for the stated vehicle. By using this product, you acknowledge that any deviations from the standard vehicle configuration or failure to follow the installation instructions precisely may impact the validity of the installation and could void the product warranty.

This install guide was acknowledged by the customer on

YOUR VEHICLE

MAKE: NISSAN
MODEL: 370Z
YEAR: 06/09-on
VARIANT: 3.7 V6 VVEL
 RWD, Petrol, 3.7L, 6Cyl,
 VQ37VHR, 243kW
REGO: Not provided
VIN: Not provided
VID:
 This install guide was
 generated on 8 May 2024.

TORQUE



Approximately 130 percent more torque capacity than OEM.

ACTUATION



Lighter actuation effort than OEM. Pedal release may be higher.

YOUR NEW UNICLUTCH



Part No.
 UC1024100
 Do not use other models.

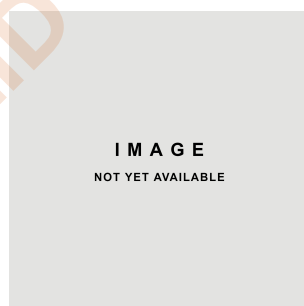
FITMENT KIT NOTE: Suits OE Flywheel

YOUR UNICLUTCH FITMENT KIT



Part No.
 UCFK10296-A-001 Dowel
 Pos G

YOUR FLYWHEEL



Part No.
 DMR4046

SPACING REQUIRED

Spacer Height:

0 mm



Bolts supplied must be torqued to 22 ft-lb /30 Nm.
 Apply Loctite® 243 or an equivalent medium-strength thread locker to the bolt threads before installation.
 For full installation instructions refer to the installation guide

RELEASE BEARING/CSC

SPIGOT BEARING/BUSH



RSB520

Unless stated in the Fitment Kit Notes above, UniClutch suits OEM service parts. The above Release Bearing or CSC and Spigot Bearing or Bush are references from Clutch Industries Australia. Equivalent OEM spec parts may be used.

THIS INSTALL GUIDE IS ONLY VALID UNTIL 15th May 2024